
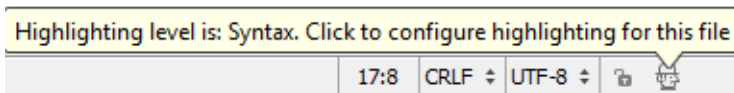


Accessing Inspection Settings

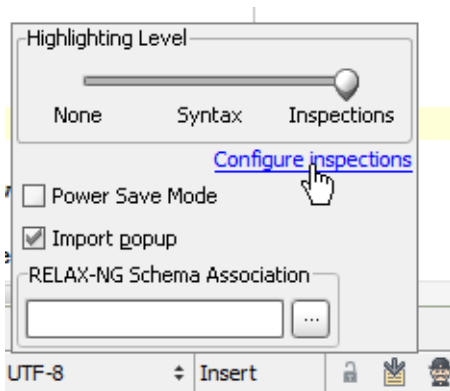
Inspections and [inspection profiles](#) are editable in the [Inspections](#) settings page. IntelliJ IDEA provides several ways to gain access to inspection settings.


To access inspections and profiles settings, do one of the following

- On the main menu, choose **File | Settings** , and then click **Inspections**.
- On the main toolbar, click  and then click **Inspections**.
- Click the current profile icon in the Status bar



and then click the **Configure inspection** link.



- In the editor, open the suggestion list, click the right arrow, and choose **Edit inspection profile settings** on the submenu.
- In in the [Inspection tool window](#), click **Edit Settings**  on the toolbar or use the corresponding context menu command.

See Also

Concepts:

- [Code Inspection](#)

Procedures:

- [Configuring IDE Settings](#)
- [Customizing Profiles](#)
- [Disabling and Enabling Inspections](#)
- [Running Inspections](#)

Reference:

- [Inspections](#)

Web Resources:

- [Developer Community](#) 