


# Accessing the IDE Settings

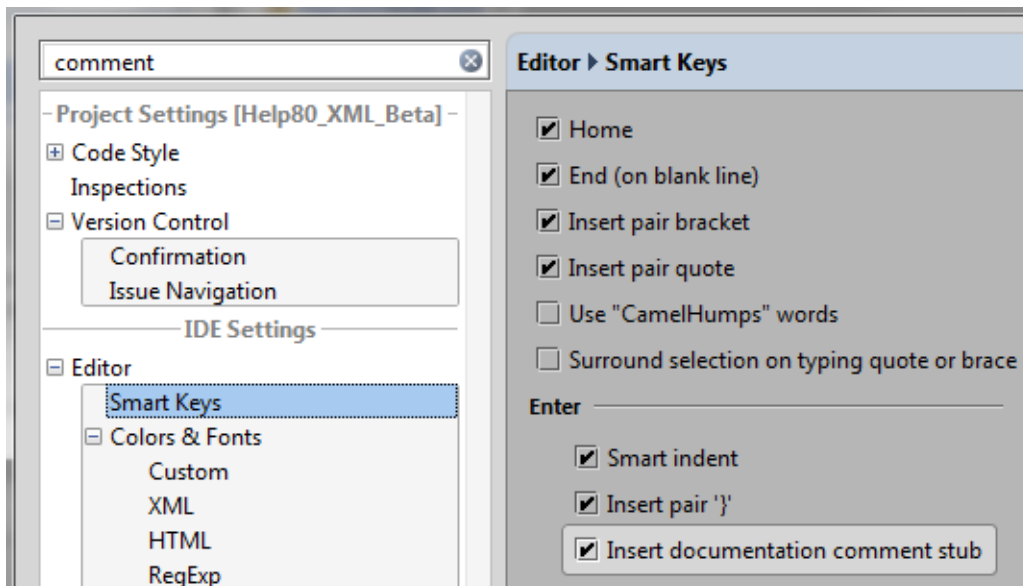
---

## To gain access to the IDE Settings

1. Do one of the following:
  - Press **Ctrl+Alt+S**.
  - On the main toolbar, click .
  - On the main menu, choose: **File | Settings**
  - Press **Ctrl+Shift+A**, type `settings` and press **Enter**.
2. In the **Settings** dialog box that opens, select the desired page under the **IDE Settings** node.

## To quickly find an option or setting

1. **Open the IDE Settings.**
2. In the **Search** field, start typing the name of the setting or a part of its name. As you type, the first matching node in the list is highlighted and the corresponding page is displayed.



## See Also

### Concepts:

- [Project and IDE Settings](#)

### Reference:

- [Settings / Preferences Dialog](#)

### Web Resources:

- [Developer Community](#) 