

Building Class Hierarchy

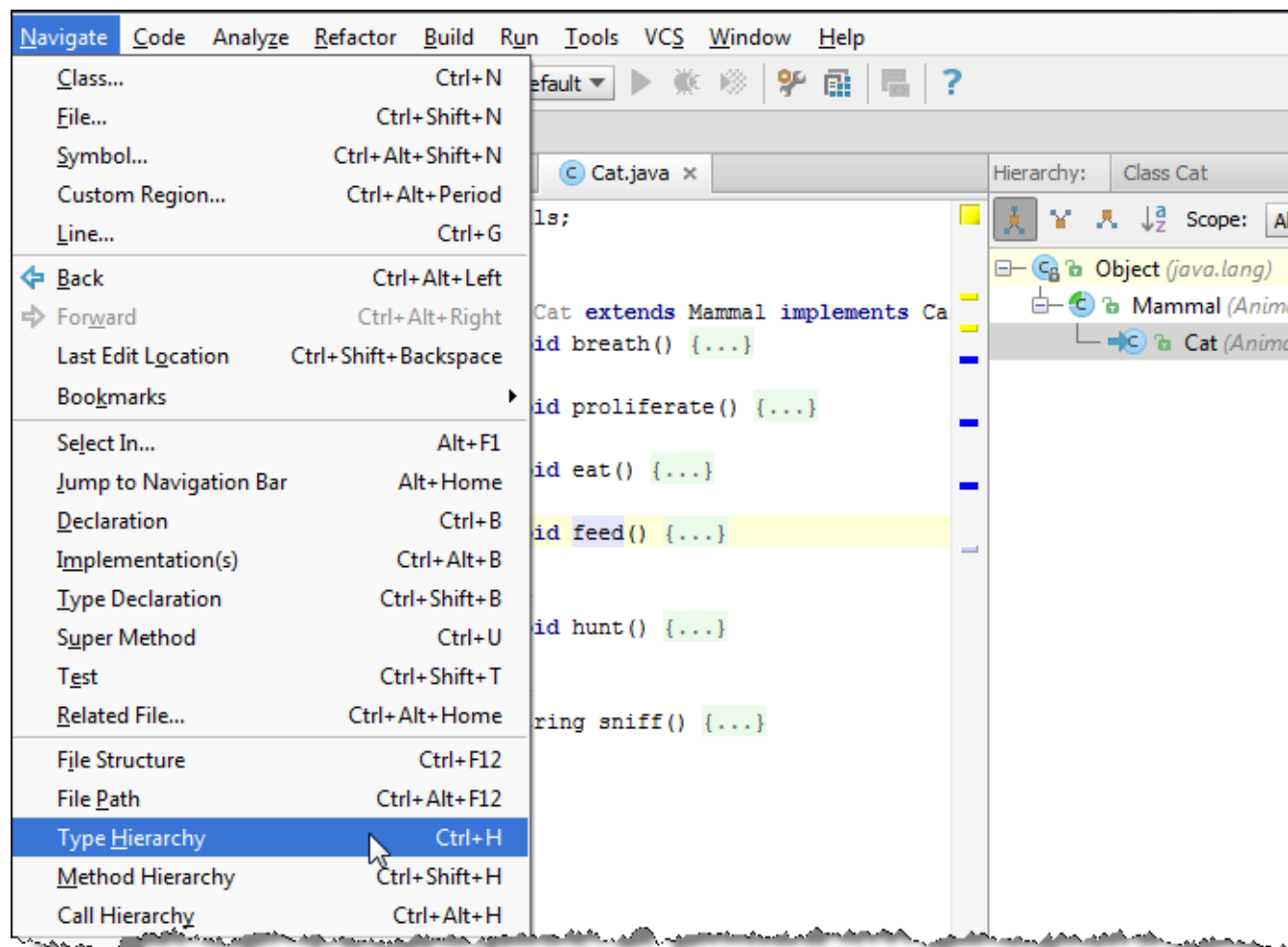
You can explore the hierarchy of parent and children classes of a selected class in the [Hierarchy tool window](#).

Note that the Hierarchy tool window only becomes available, when you build the class hierarchy, as described below.

To build the hierarchy of classes

1. Select the desired class in the Project tool window, or open it in the editor.
2. On the main menu, choose **Navigate | Type Hierarchy** or press **Ctrl+H**.

The class hierarchy appears in the [Hierarchy tool window](#).



See Also

Procedures:

- [Retaining Hierarchy Tabs](#)
- [Viewing Hierarchies](#)

Reference:

- [Hierarchy Tool Window](#)

Web Resources:

- [Developer Community](#)