

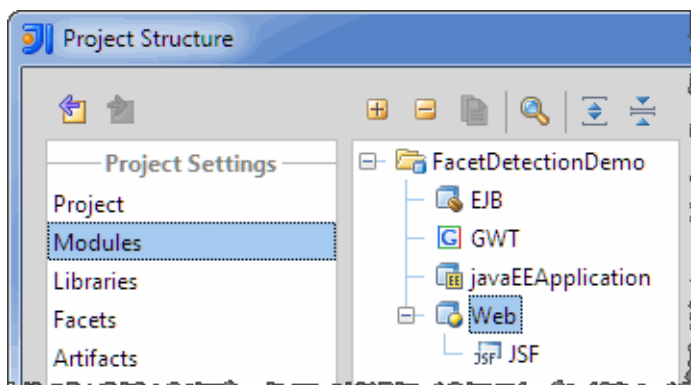
## Changing Facet Settings

---

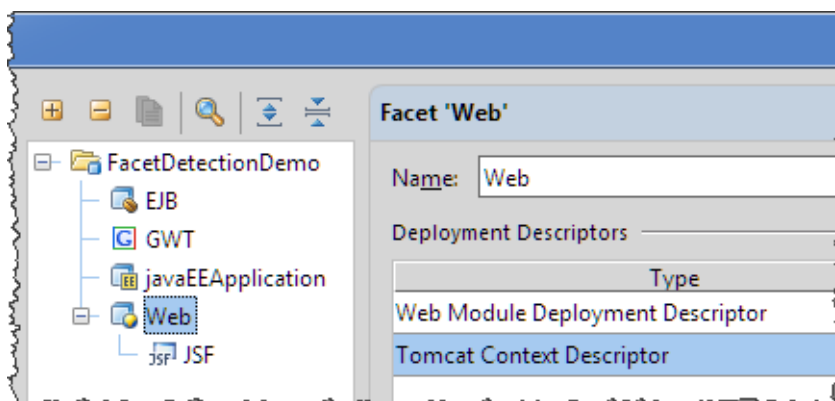
Facet settings vary depending on the facet types. This section provides only general instructions for changing these settings. Facet-specific options are discussed [elsewhere](#).

### To change facet settings

1. Open the [Project Structure dialog](#) (Ctrl+Shift+Alt+S).
2. In the left-hand pane, click **Modules**.
3. Expand the necessary module node to see the facets associated with this module.



4. Click the desired facet. The facet settings are shown in the right-hand part of the dialog.



5. Modify the facet settings as required and click **OK**.

### See Also

#### Concepts:

- [Facet](#)

#### Procedures:

- [Enabling JPA Support](#)
- [Enabling Hibernate Support](#)
- [Creating a Module with Groovy Support](#)
- [Enabling GWT Support](#)
- [Preparing for JSF Application Development](#)
- [Enabling Spring Support](#)
- [Enabling Struts Support](#)
- [Enabling Struts 2 Support](#)
- [Managing Facets](#)

#### Reference:

- [Facet Page](#)
- [Facets](#)

**Web Resources:**

- [Developer Community](#) 