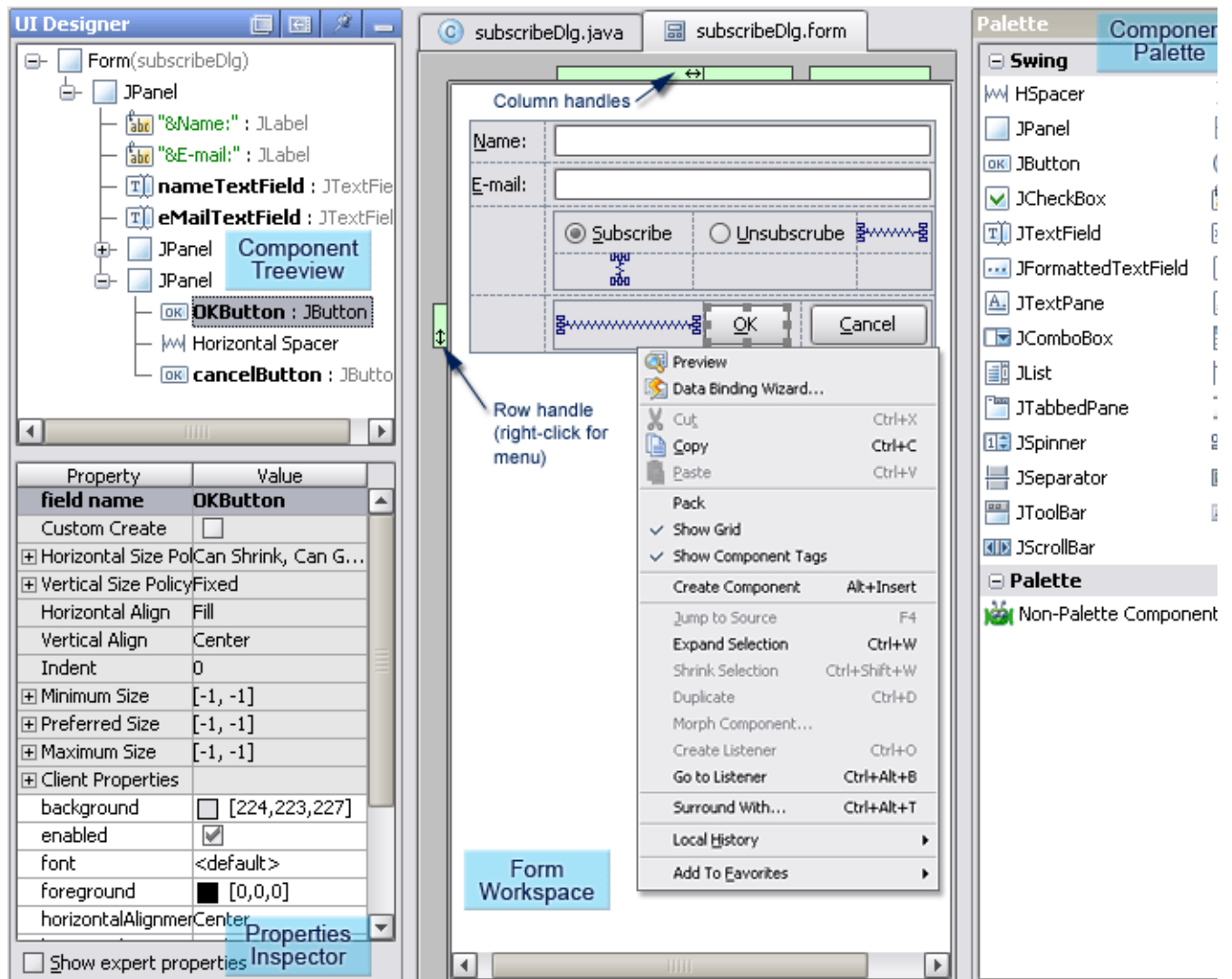


Components of the GUI Designer

The GUI Designer occupies the same space in the IntelliJ IDEA main window as the Editor. Each GUI form opens in a separate tab. (For information on how to create and open forms, see [Building GUI Forms](#)). The GUI Designer consists of the following main components:

- [Components Treeview](#)
- [Properties Inspector](#)
- [Components Palette](#)
- [Form Workspace](#)



See Also

Reference:

- [GUI Designer](#)

Web Resources:

- [Developer Community](#)