

## Copying Code Style Settings

---

You can define the code styles that differ from the pre-defined ones. These code style schemes are stored in XML files, in the `config/codestyles` folder under the user home directory.

You can use the created copy for modifying code styles, and for export.

If you select a code style scheme other than *Project*, then this code style will be saved for a project. Thus you can assign a global code style for each project.

In this section:

- [Creating a global copy of a code style scheme](#)
- [Creating a project copy of a code style scheme](#)

### To create a copy of code style settings

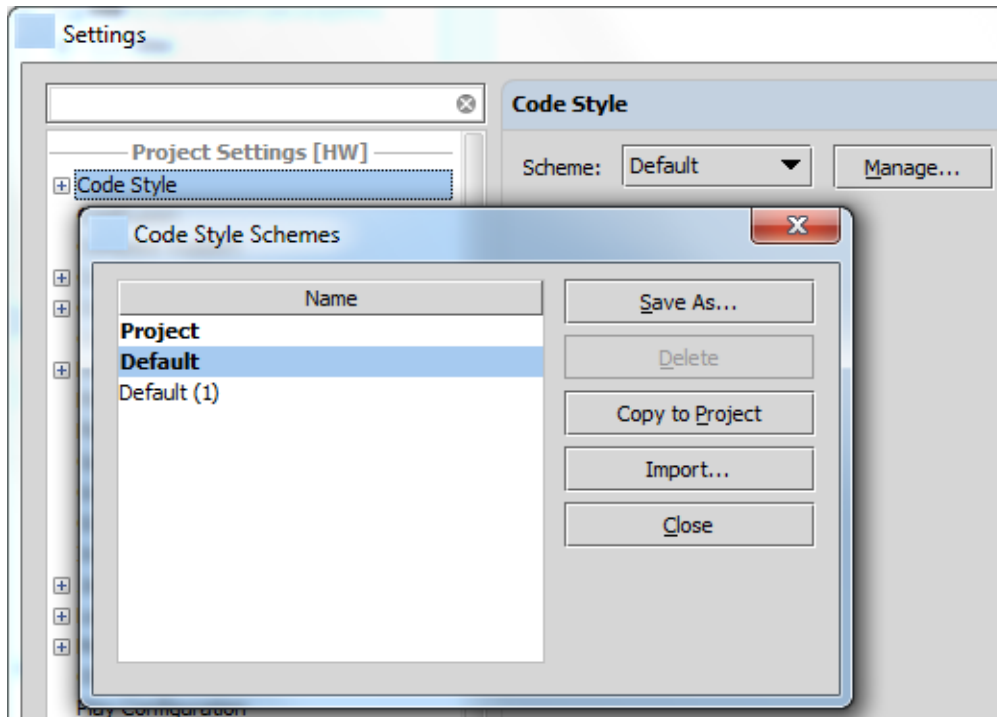
1. In the [Code Style page](#), select the desired scheme from the drop-down list, and click **Manage**.
2. In the [Code Style Schemes](#) dialog box that opens, click **Save As...**
3. In the **Save Code Style Scheme As** dialog box, type the name of the new scheme.

IntelliJ IDEA saves the new code style with the specified name in the `config/codestyles/<code_style_name>.xml` file under the IntelliJ IDEA home directory.

4. Close the Code Style Schemes dialog box, and apply changes.

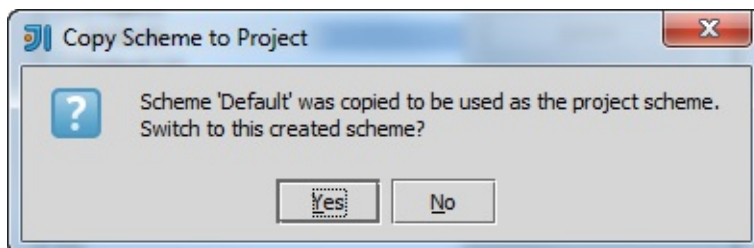
## To copy code style settings to a current project

1. In the [Code Style](#) page, select the desired scheme from the drop-down list, and click **Manage**.
2. In the [Code Style Schemes](#) dialog box that opens, click **Copy to Project**:



The selected code style is saved in the `.idea` directory in the file `codeStyleSettings.xml`.

3. In the **Copy Scheme to Project** dialog box, confirm switching to the new scheme, if necessary (**Yes**):



Then close the Code Style Schemes dialog box, and apply changes.

## See Also

### Procedures:

- [Configuring Project Settings](#)
- [Configuring IDE Settings](#)

### Reference:

- [Code Style](#)
- [Code Style Schemes](#)

### Web Resources:

- [Developer Community](#)