

Creating Fields in Persistence Entities

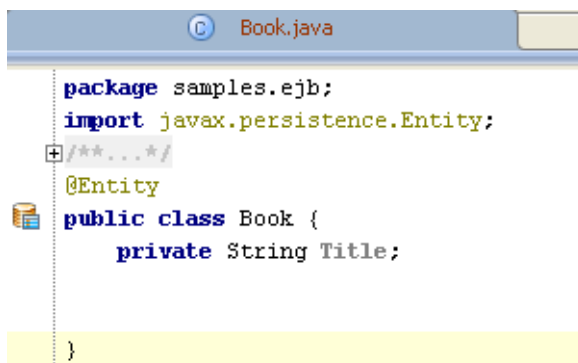
To define how an entity class will be persisted to a data store, you have to specify the persistent fields. This can be done in one of the following ways:

- [By editing the source code](#) of an entity class
- Using the [context menu of an entity](#)

When a persistent field is added to an entity, the respective annotated properties are added to the source file of the entity class, the field is marked with a gutter icon in the editor, and the member nodes are added to the persistence unit node in the [Persistence](#) tool window , and to the ER diagram of the persistence unit.

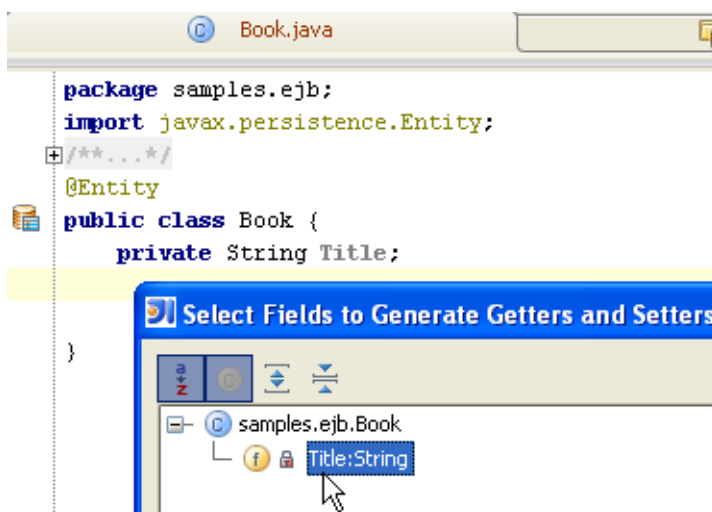
To create persistence fields in the source code of an entity class

1. Open the desired entity class for editing.
2. Type the desired field declaration:



```
package samples.ejb;
import javax.persistence.Entity;
/**...*/
@Entity
public class Book {
    private String Title;
}
```

3. Create getter and setter methods. To do that, press Alt+Insert, and select **Getter and Setter** from the suggestion list:



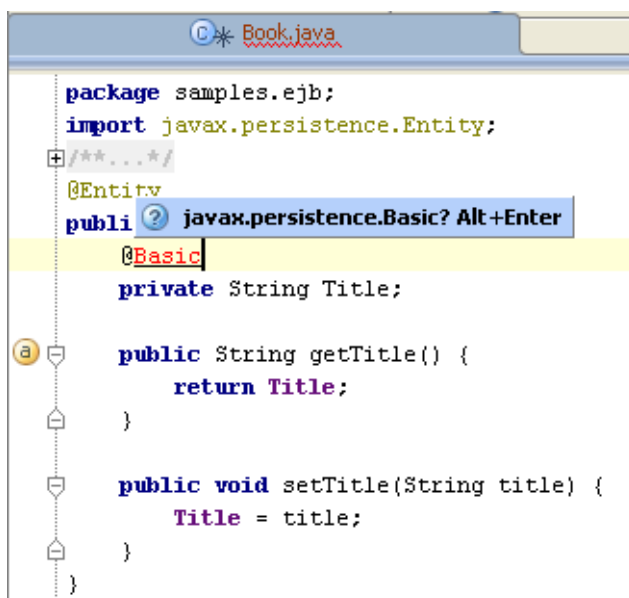
```
package samples.ejb;
import javax.persistence.Entity;
/**...*/
@Entity
public class Book {
    private String Title;
}
```

Select Fields to Generate Getters and Setters

samples.ejb.Book

Title:String

4. Annotate the field. If the required import is missing, use the suggested quick fix:



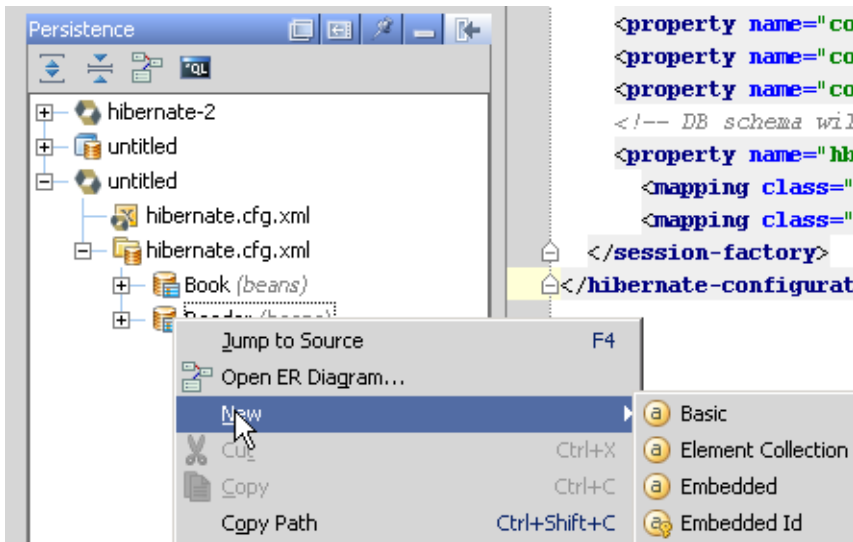
```
package samples.ejb;
import javax.persistence.Entity;
/**...*/
@Entity
public class Book {
    @Basic
    private String Title;

    public String getTitle() {
        return Title;
    }

    public void setTitle(String title) {
        Title = title;
    }
}
```

To create persistence fields using the entity context menu

1. Open [Persistence tool window](#).
2. In the desired persistence unit, right-click persistence entity, and choose the desired persistence field type:



The available options are:

- [Basic](#)
- [Element Collection](#) (a collection of [embeddable](#) objects)
- [Embedded](#)
- [Embedded Id](#)
- [Id](#)
- [Version](#)

You can invoke the same command on the context menu of an entity in the ER diagram.

3. In the dialog box that opens, specify the field name and type, and click OK.

See Also

Concepts:

- [Data Sources](#)

External Links:

- <http://code.google.com/appengine/docs/java/datastore/dataclasses.html>
- <http://java.sun.com/javaee/5/docs/tutorial/doc/bnbpy.html>

Web Resources:

- [Developer Community](#)