

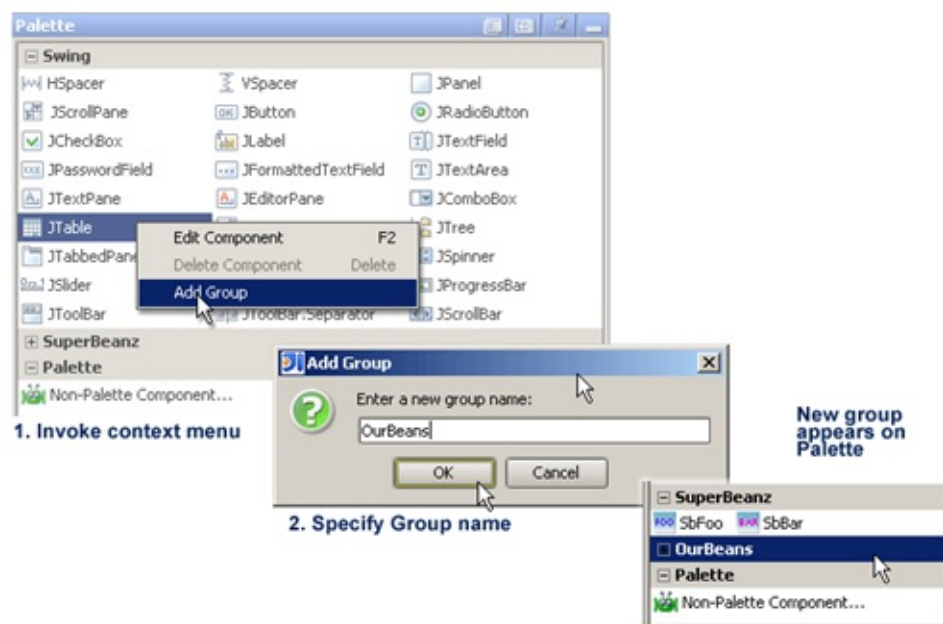
Creating Groups

The GUI Designer's Palette tool window can contain groups which can be used as a means of organizing GUI components. Each Group can contain one or more GUI components, and can optionally display a custom icon for each component.

Initially, there are 2 default groups: **Swing** that contains the default `javax.swing` components, and **Palette** that contains one default node: **Non-Palette Component**. You can create other Groups for components from your libraries of GUI components and forms.

To create a new group

1. Right-click anywhere in the Palette tool window and choose **Add Group** on the context menu.
2. In the Add Group dialog, type a name for the new Group.
3. Click **OK**. A new group with the specified name adds to the Palette.



See Also

Reference:

- [Palette](#)

Web Resources:

- [Developer Community](#)