

Enabling and Configuring Perforce Integration

The Perforce Integration is disabled by default. If you want to perform Perforce-related operations right from IntelliJ IDEA, enable the integration at the IDE level and associate the project root or specific directories with Perforce. The general procedure is described in the section [Enabling Version Control](#).

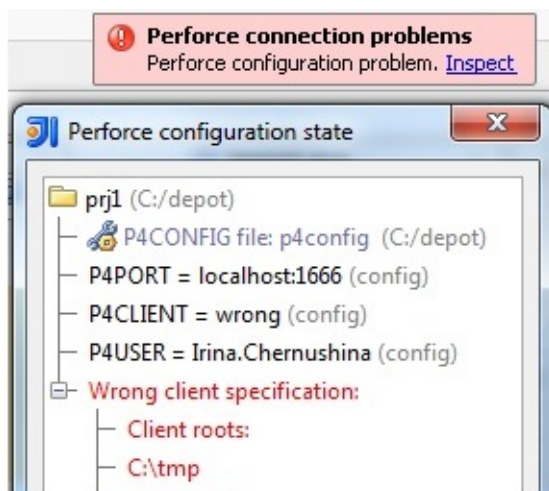
In this section:

- [Enabling Perforce integration for a project or directory](#)
- [Configuring Perforce integration settings](#)

To enable Perforce integration for a project or directory

1. [Open the project settings](#) and click **Version Control**.
2. In the [Version Control](#) page, that opens, point to the desired root.
This can be **<Project Root>** or a [content root](#).
3. From the **VCS** drop-down list, choose **Perforce**.

If you specify a wrong client workspace, and your project roots do not match with the workspace roots, IntelliJ IDEA displays a pop-up window with a warning.



Click **Inspect** to view and fix the discrepancies.

To configure Perforce integration

1. [Open the project settings](#), and then open the [VCSs](#) page by clicking **VCSs** under the **Version Control** node.
2. Open the [Perforce](#) page.
3. To establish live connection to the Perforce server, select the **Perforce is online** check box.
4. Specify which credentials you want to use for connecting to the Perforce server.
 - To use the connection settings from your P4CONFIG files, choose the **Use P4CONFIG or default connection** option.

If you are using P4CONFIG files for configuration, IntelliJ IDEA shows what config files it has found and what other default settings are used. This way you can be sure that your P4CONFIG files are detected and taken into account.

- To configure connection manually, choose the **Use connection parameters** option and specify the following settings in the corresponding text boxes:
 1. The *Port* the Perforce client will listen to.
 2. The *Client name*.
 3. Your *User name* and *Password* to authenticate to the server.
5. To use ticket-based authentication, select the **Login authentication** check box. Otherwise, password-based authentication will be used. In either cases IntelliJ IDEA uses the login name and password specified in the dialog box or stored in the P4CONFIG files.
 6. To attempt to log on the Perforce server without authentication, select the **Try to login silently** check box.
 7. To have IntelliJ IDEA create a P4.output file and store the output of Perforce commands in it, select the **Dump Perforce Commands to:** check box.
 8. Specify the path to the Perforce executable file. Click **Test Connection** to make sure your settings ensure successful connection.
 9. In the **Timeout** field, specify the lapse of time in seconds during which IntelliJ IDEA waits for response from the server. If the server does not respond in due time, the user is prompted to disable integration.
 10. To enable displaying the branch history of a specified file, including all file branch points, edits, and merges, select the **Show branching history** check box.
 11. To have IntelliJ IDEA point at committed changes that are also integrated to other changelists and provide information on the target changelists that received the content in question, select the **Show integrated changelists in committed changes** check box.
 12. To get the user interface for attaching and detaching Perforce jobs to changelists, select the **Enable Perforce Jobs Support** check box.

See Also

Concepts:

- [Supported Version Control Systems](#)

Reference:

- [Version Control Reference](#)
- [Version Control](#)

Web Resources:

- [Developer Community](#) 

