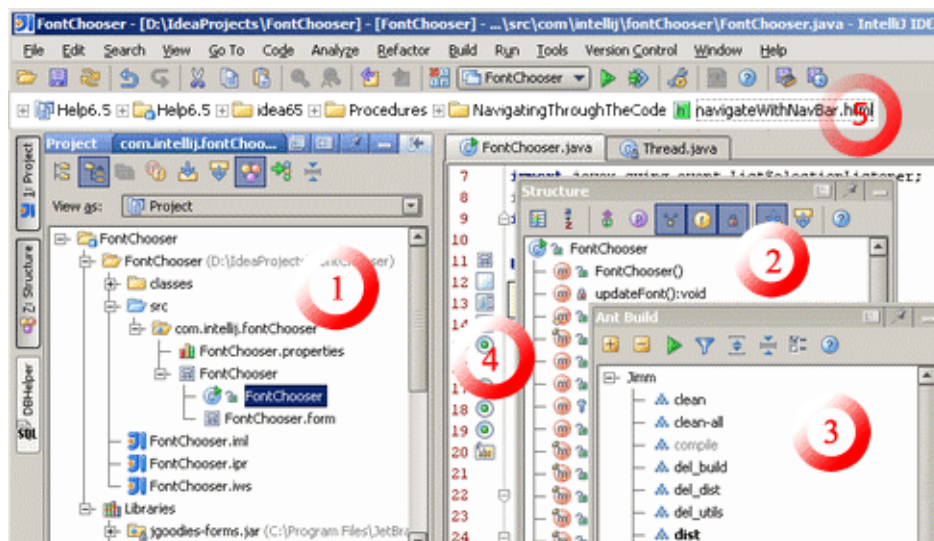


Familiarize Yourself with IDE Navigation

IntelliJ IDEA lets you walk through your projects and files in a wide variety of ways. Dedicated views and tool windows let you examine your code at any level - from details to the top-level structure.



This sample displays some of the navigation elements:

Project view

[Project view](#) shows the top-level project structure.

Structure

[Structure](#) showing the drill down of document elements or class members.

Auxiliary tool windows

For example, [Ant Build tool window](#) lets you navigate through the current Ant tasks.

Gutter icons

Active [Gutter Icons](#) you can use to [jump between an element's source and usage](#).

Navigation bar

[Navigation bar](#) lets you quickly navigate through the project file structure.

Refer to the section [Navigating Through the Source Code](#) for more information.

See Also

Procedures:

- [Navigating Through the Source Code](#)
- [Navigating with Navigation Bar](#)
- [Navigating with Structure Views](#)

Reference:

- [Keyboard Shortcuts by Category](#)
- [Tool Windows Reference](#)

Getting Started:

- [Guided Tour Around IntelliJ IDEA User Interface](#)

Web Resources:

- [Developer Community](#) 