

Griffon

Griffon [🔗](#) support is available in the Community and in the Ultimate editions of IntelliJ IDEA.

In this section:

- Griffon
 - [Prerequisites](#)
 - [Griffon features in IntelliJ IDEA](#)
 - [Griffon changes in the IntelliJ IDEA UI](#)
- [Creating a Griffon Application Module](#)

Prerequisites

Make sure that the desired SDK is downloaded and installed on your computer, and the libraries are properly configured.

Also, make sure that Groovy plugin is enabled in IntelliJ IDEA. The plugin is bundled with IntelliJ IDEA and activated by default. If the plugin is not enabled, [enable the plugin](#).

Griffon Features in IntelliJ IDEA

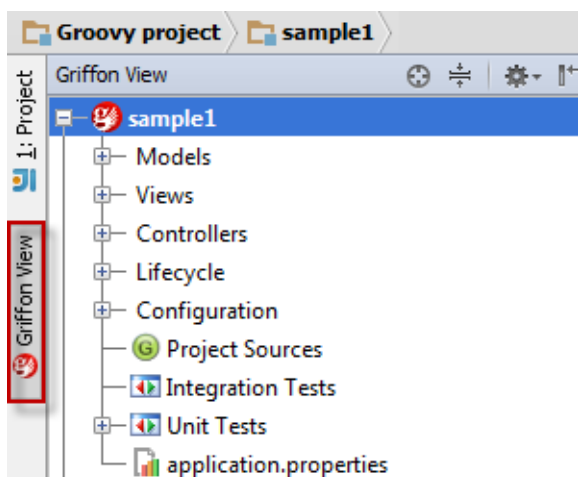
Griffon support in IntelliJ IDEA includes the following features:

- Automated way of creating *Griffon Applications* that provides generation of the specific structure and artifacts.
- Automatic enabling Groovy support in the Griffon Application modules, allowing creation of the Groovy classes, interfaces and scripts.
- Execution of the [targets](#).
- ability to [generate tests](#).
- [Code completion](#).
- Dedicated [run/debug configuration](#).

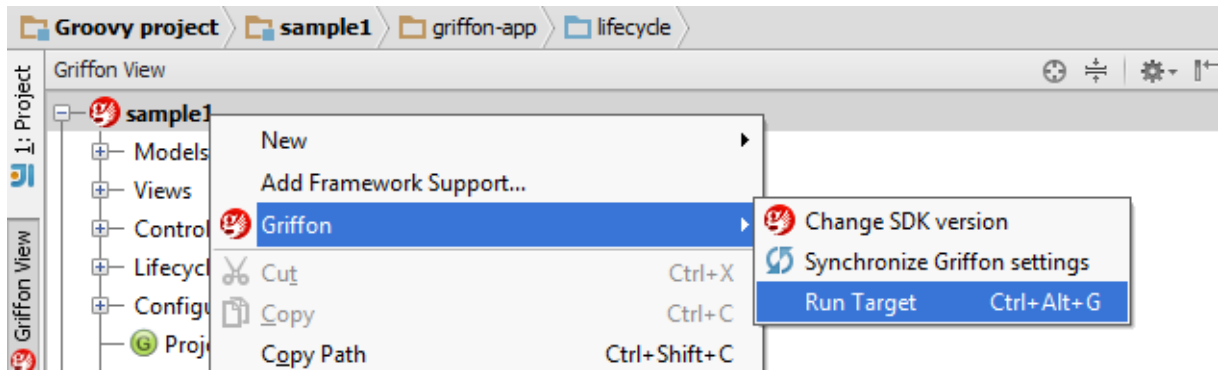
Griffon Changes in the IntelliJ IDEA UI

Once IntelliJ IDEA recognizes the project or module as a Griffon application, it introduces the following changes to the UI:

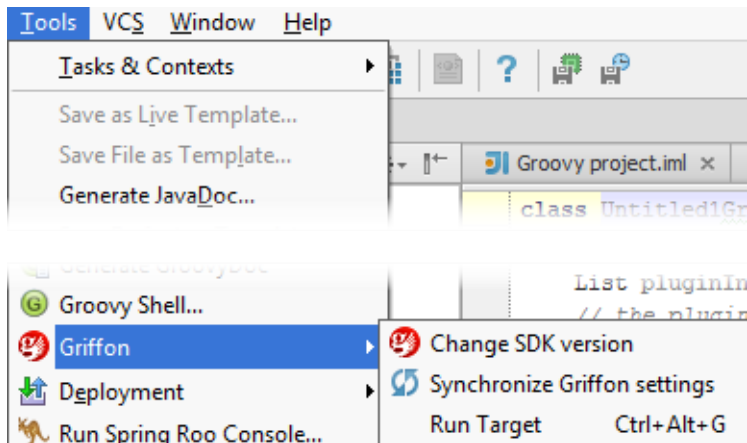
- [Griffon View](#) tool window is added, and the tool window button appears in the left tool windows bar:



- **Griffon** node is added to the context menu of the Griffon modules in the Griffon view:



- **Griffon** node is added to the **Tools** menu:



See Also

Language and Framework-Specific Guidelines:

- [Groovy](#)

Reference:

- [Griffon Tool Window](#)
- [Run/Debug Configuration. Griffon](#)

External Links:

- [Griffon](#)

Web Resources:

- [Developer Community](#)