

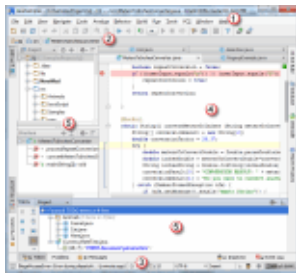
## Guided Tour Around IntelliJ IDEA User Interface

---

This chapter gives you insight into how IntelliJ IDEA user interface is organized to help you find your way through your working environment.

This chapter outlines the default (out-of-the-box) IDE interface layout. Note that plugins and other add-ons you are installing may change the way your IDE looks and behaves, for example there can be extra command buttons or menu items appearing in uncommon locations.

When you first run IntelliJ IDEA, or have no open project, IntelliJ IDEA displays the [Welcome screen](#), which enables quick access to the major entry points. When a project is opened, IntelliJ IDEA displays the main window. This window is made up of six logical areas, which are shown on the picture below, marked with red number labels.



1. [Menus and toolbars](#) - the main menu and toolbars let you carry out various commands.
2. [Navigation bar](#) that helps navigate through the project and open files for editing.
3. [The status bar](#) - indicates the status of your project, the entire IDE, and shows various warning and information messages.
4. [The editor](#) - here you create and modify the code.
5. [IntelliJ IDEA tool windows](#) - secondary windows that provide access to various specific tasks (project management, source code search and navigation, running and debugging, integration with version control systems, etc.).

### See Also

Concepts:

- [Basic Concepts](#)

Procedures:

- [IntelliJ IDEA Usage Guidelines](#)

Reference:

- [Reference](#)

Web Resources:

- [Developer Community](#) 