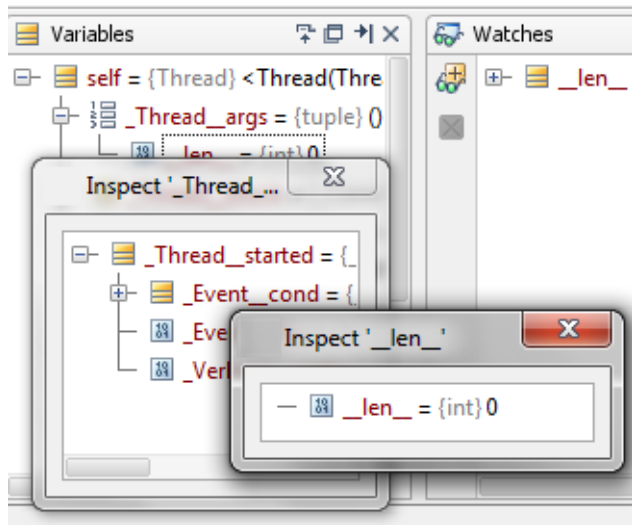


Inspecting Watched Items

IntelliJ IDEA helps inspect any reference in its own window. For example, if you need to examine several references in detail, you can open an inspection window for each of them. So doing, a separate window is created for each reference and all of its child references.

The inspection windows are non-modal, and you can launch as many as of them required. All changes of the references are immediately reflected in the corresponding inspection windows.



To inspect a reference

1. Select the item to be inspected on the **Variables** or **Watches** pane.
2. On the context menu, choose **Inspect**.

See Also

Procedures:

- [Debugging](#)
- [Pausing and Resuming the Debugger Session](#)

Reference:

- [Debug Tool Window](#)
- [Evaluate Expression](#)
- [Debug Tool Window. Variables](#)
- [Debug Tool Window. Watches](#)

Web Resources:

- [Developer Community](#) 