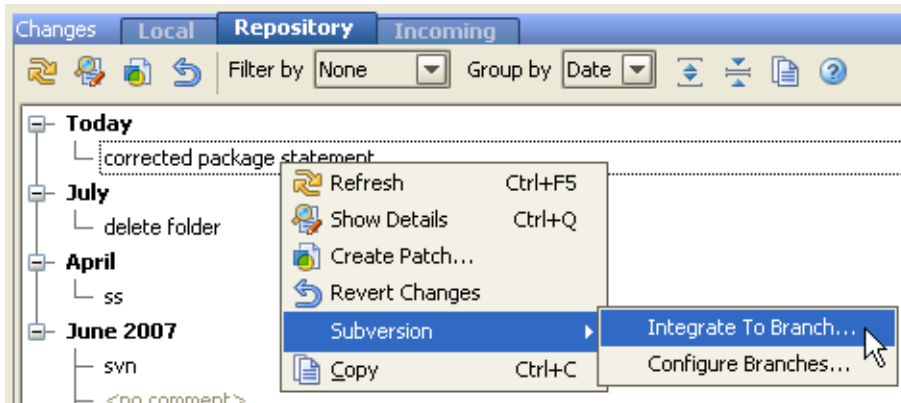


Integrating Changes to Branch


Subversion integration with IntelliJ IDEA enables you to integrate changes into a branch of your choice and commit the integration results to the repository.

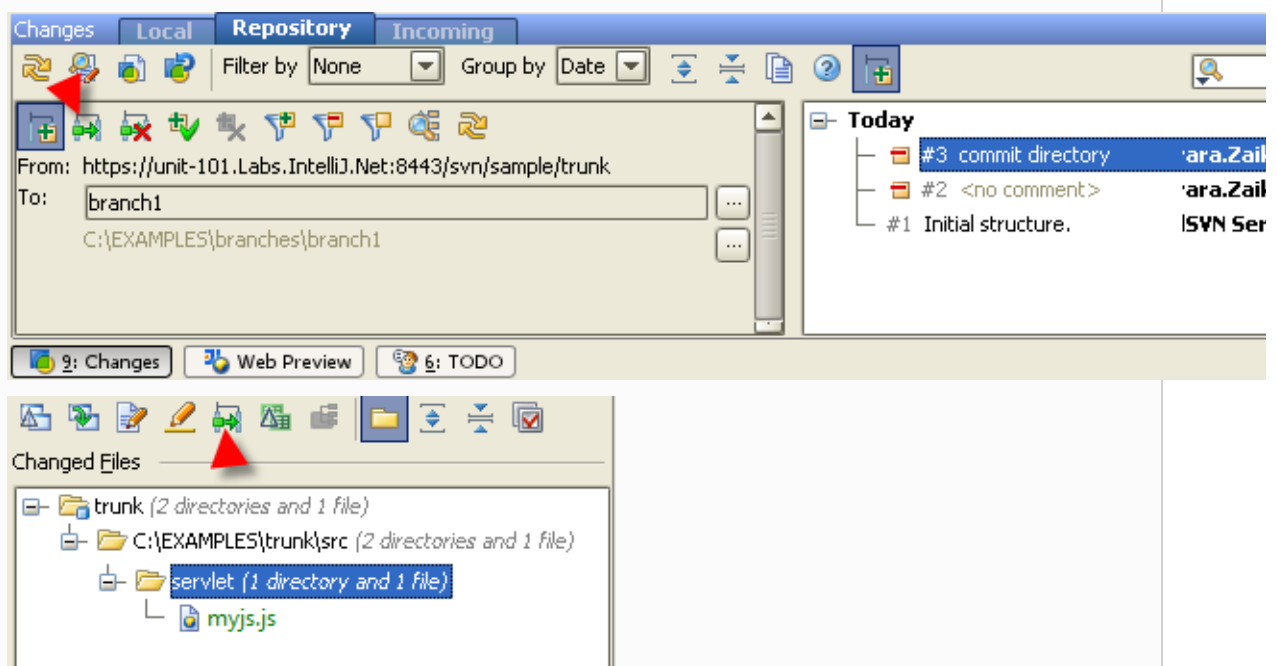
To integrate changes from one branch to another

1. In the **Changes** tool window, switch to the **Repository** tab.
2. Right-click the desired change list and select **Subversion | Integrate To Branch** in the context menu:



3. To integrate specific files from a changelist, select the file(s) in the **Changed Files** pane and select **Subversion | Integrate To Branch** in the context menu.

If you are using SVN 1.5 or higher both on the server and in your local working copy, select the relevant changelist/file(s) in the **Changelists** or **Changed Files** pane and click  on the toolbar.



4. The **Integrate to Branch** dialog box opens displaying the URL addresses of the source and target branches and a list of available local working copies. In the **Integrate into Working Copy** list, select the path to the local working copy into which the changelist will be integrated.
5. To add a path to the list, click the **+** button.

Make sure the specified working copy directory is under Subversion version control!

6. To remove a path from the list, click the **-** button.

7. To preview the merge result by enabling the `--dry-run` switch of the `svn` command, select the **Try merge, but make no changes** check box.

If this check box is not selected, the sources are merged silently.

8. To view all the files with local modifications after update, select the **Run status after update** check box.

Technically, this means that the `SVN status` command will be applied after commit.

9. Click **OK**. The [Commit Changes](#) dialog box opens.
10. View the summary, specify the necessary option, and [run commit](#).
11. To view the integration results, open the [Version Control](#) tool window by choosing **View | Tool Windows | Version Control**.

This information is available if you specified the **Run status after update** option in the **Integrate to Branch** dialog box.

See Also

Concepts:

- [Version Control with IntelliJ IDEA](#)
- [Local, Repository, and Incoming Changes](#)

Procedures:

- [Checking in Files](#)
- [Using Subversion Integration](#)
- [Integrating Files and Changelists from the Changes Tool Window](#)

Reference:

- [Version Control Reference](#)
- [Repository and Incoming Tabs](#)
- [Integrate to Branch](#)

Web Resources:

- [Developer Community](#) 