


Opening, Reopening and Closing Projects

In this section:

- [Opening an existing project](#)
- [Reopening a recent project](#)
- [Closing a project](#)

To open an existing project

1. Do one of the following:
 - On the [Welcome screen](#), click **Open**.
 - On the main menu, choose **File | Open**.
2. In the Open Project dialog box, navigate to the desired *.ipr, .classpath, .project, or pom.xml, file or to the folder marked with the  icon, that contains project .idea directory.
3. Specify whether you want to open the project in a new frame, or close the current project and reuse the existing frame. Refer to the section [Opening Multiple Projects](#) for details.

Alternatively, you can drag the desired project from your file chooser right to the Open Project dialog without locating it there. The respective file in the dialog will be found automatically.

To reopen a recent project

IntelliJ IDEA keeps the history list of the recent projects, from which you can select the desired one.

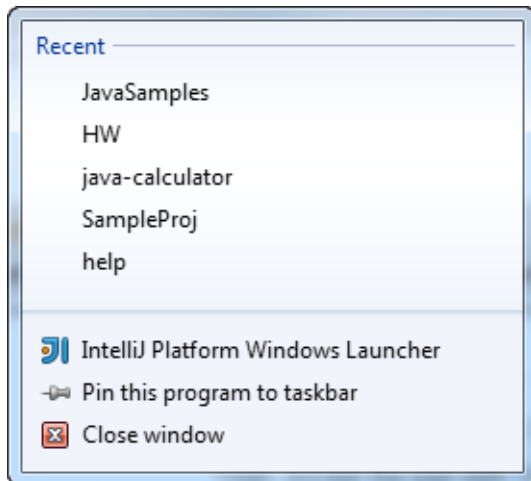
When IntelliJ IDEA starts, the most recent [project](#) reopens by default (unless this option is disabled in [General](#) page of the [IDE settings](#)).

1. Depending on your operating system, on the main menu choose
 - **File | Reopen Project** (on Windows and Linux).
 - **File | Open Recent** (on OS X).
2. Select the desired project from the list of the recent ones.
3. Specify whether you want to open the project in a new frame, or reuse the current frame.

You can also:

- Reopen a recent project from the [Welcome screen](#). To do that, just click the desired link under **Recent Projects**, or press **Alt+number**. Start typing in the Welcome screen to filter the list of recent projects.
- Terminate the project opening process, without waiting when it finishes loading, by clicking **Cancel** in the progress window.

- Right-click the task bar icon of IntelliJ IDEA. Select the desired recent project from the jumplist:



This functionality is supported for Windows 7+, and for OS X.

To close a project

When the only open project is closed, the [Welcome screen](#) is displayed. In case of multiple projects, each one is closed with its frame.

- On the main menu, choose **File | Close Project** .

See Also

Concepts:

- [Project](#)

Procedures:

- [Importing Project from Maven Model](#)
- [Importing Eclipse Projects into IntelliJ IDEA](#)

Web Resources:

- [Developer Community](#) 