


Previewing Forms

The GUI Designer provides a Preview function that enables you to see how the form will look at runtime. When the form runs in Preview mode, you can click buttons, check boxes, enter text, etc. just as at run time. Of course, there is no functionality at this point.

The Form Preview window enables you to change look and feel of the form, resize it, and exit the preview mode.

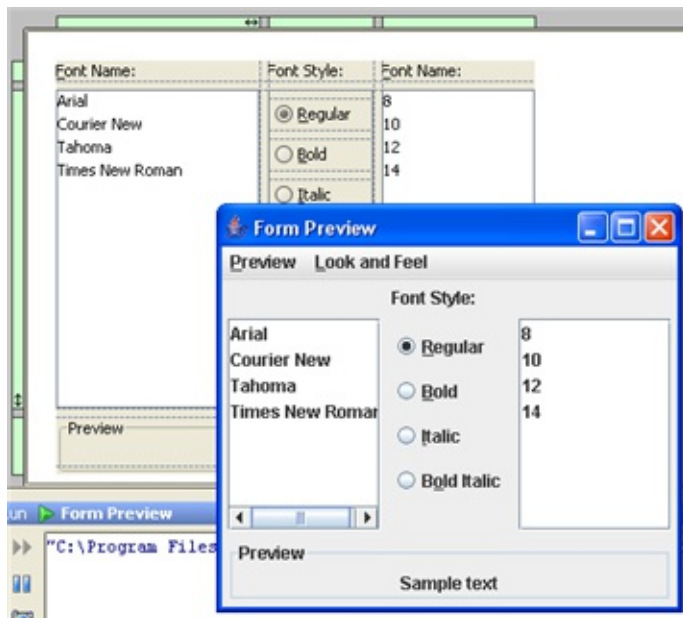
Form Preview shows only the properties specified by the GUI Designer in the \$\$\$setupUI\$\$\$ method.

To preview a gui form, do one of the following

- Right-click a form, and choose **Preview** on the context menu.
- With the form having the focus, click preview button  on the main toolbar.

To exit the preview mode, do one of the following

- On the main menu of the Preview Form window, choose **Preview | Exit**.
- Click  on the toolbar of the Preview Form window.



See Also

Procedures:

- [Designing GUI. Major Steps](#)

Web Resources:

- [Developer Community](#)