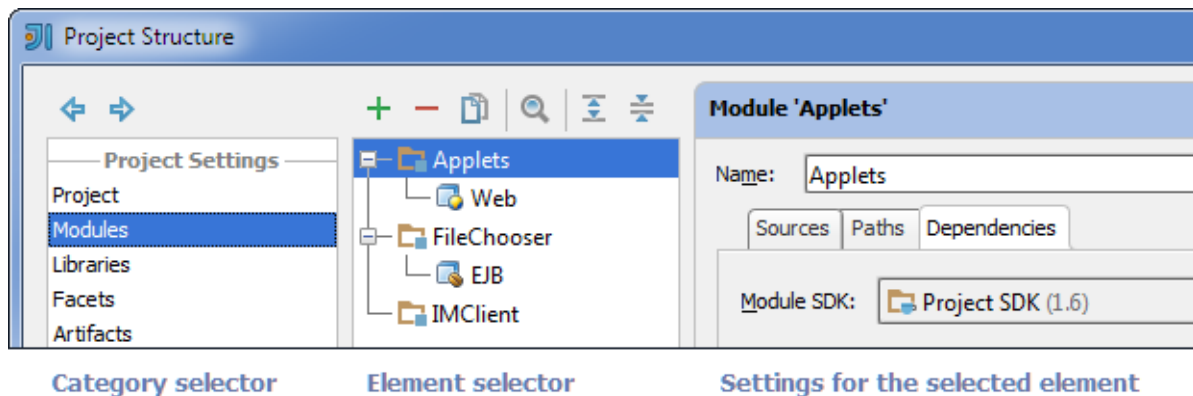


Project Structure Dialog

File | Project Structure

□

The **Project Structure** dialog lets you manage your [project](#) and IDE-level elements such as [modules](#), [facets](#), [libraries](#), [artifacts](#) and [SDKs](#).



In most of the cases, there are two panes in the left-hand part that implement a two-level selector. The only exception is when you select **Project**. There is only one selector pane in this case.

On this page:

- [Category selector](#)
- [Element selector](#)

In this section:



- [Project. General Settings Page](#)
- [Modules](#)
- [Libraries and Global Libraries](#)
- [Facets](#)
- [Artifacts](#)
- [SDKs](#)

Category selector

The leftmost pane is for selecting a category. There are two groups of categories in this pane.

The first group (**Project Settings**) provides access to the elements of your current project. In the second group (**Platform Settings**) are the IDE-level entities that are available in all of your projects.

When you select a category in the leftmost pane, the pane to the right shows a list (or, if appropriate, a tree) of elements belonging to this category.

The toolbar icons **Back**  and **Forward**  are for moving back and forward in the history of selected categories.



Element selector

The element selector pane lets you manage the elements in the corresponding category and their settings.

When you select an element, its settings are shown on a page to the right.

To perform various operations with the elements, use the toolbar icons, context menu commands (accessed by right-clicking an element), or keyboard shortcuts.

The following functions are available for all element types. Complete lists of commands for different element categories (modules, libraries, etc.) are provided in the corresponding sections.

Icon	Command	Shortcut	Description
	New	Alt+Insert	Use this icon, command or shortcut to create a new element (module, library, etc.).
	Delete	Delete	Use this icon, command or shortcut to delete the selected elements.

See Also

Concepts:

- [Module](#)
- [Project](#)

Web Resources:

- [Developer Community](#) 