

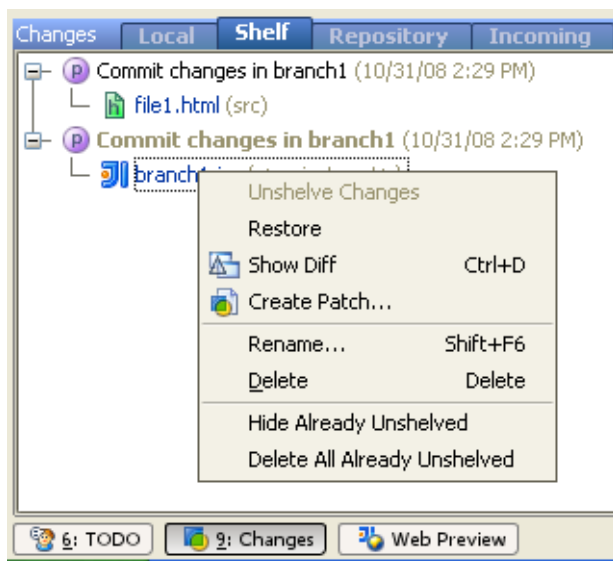
## Restoring Unshelved Changes

With IntelliJ IDEA, you can apply changes as many times as you need by restoring them to the shelf upon unshelving. You can restore both separate files and entire shelves. Unshelved changes are available for re-use until they are explicitly removed, see [Filtering Out and Removing Unshelved Changes](#).

By default, upon unshelving a change is no longer shown on the list of available shelved changes, therefore you first need to have IntelliJ IDEA display it in the **Shelf** tab.

### To restore unshelved changes

1. In the **Shelf** tab of the **Changes** tool window, choose **Show Already Unshelved** on the context menu. All the previously applied shelves are again on the list and available for unshelving.
2. Select the desired files or shelf to restore.
3. On the context menu of the selection, choose **Restore**.



### See Also

#### Concepts:

- [Shelved Changes](#)

#### Reference:

- [Shelf Tab](#)
- [Version Control Reference](#)
- [Changes Tool Window](#)

#### Web Resources:

- [Developer Community](#)