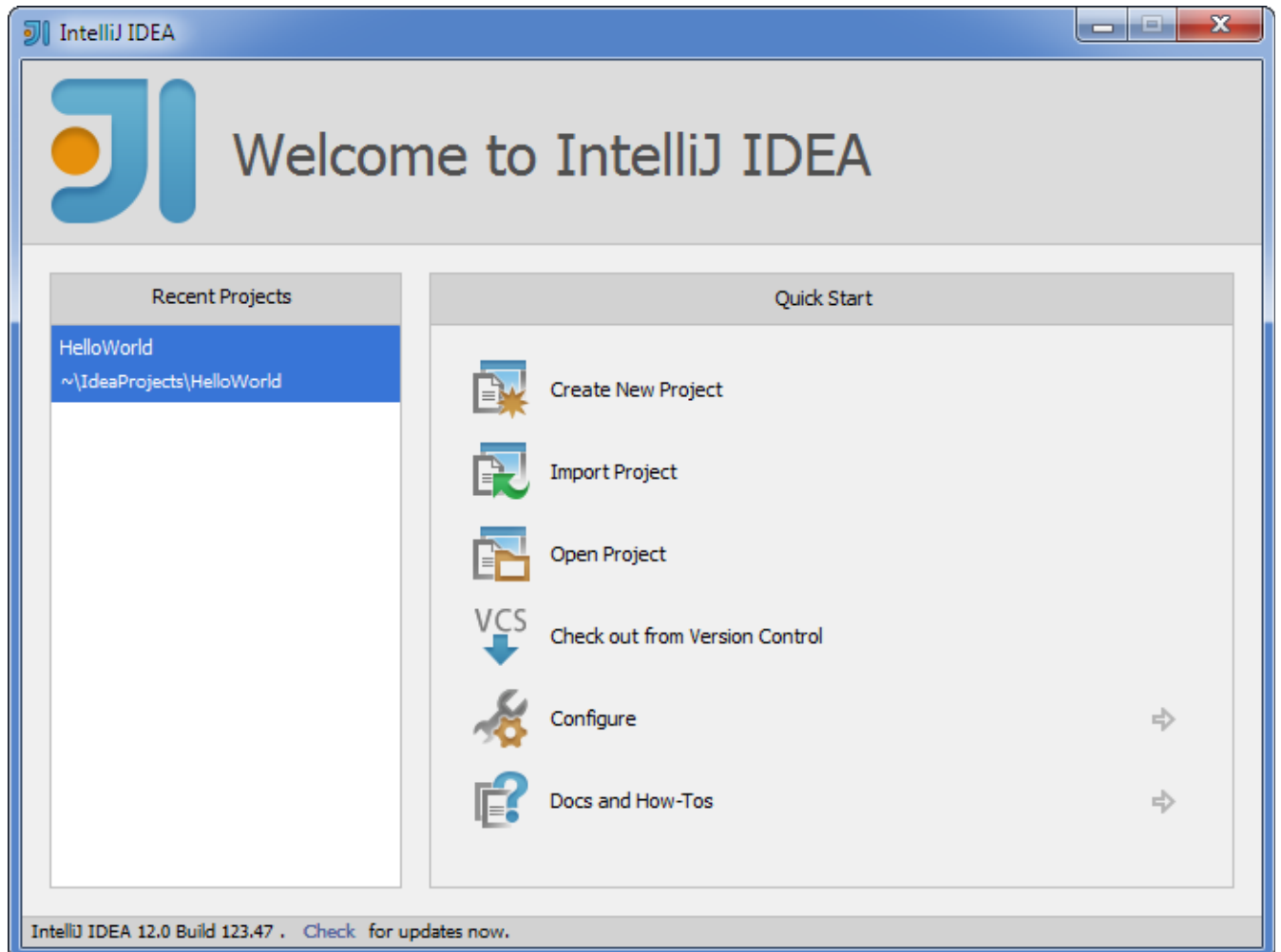


Welcome Screen

IntelliJ IDEA displays the Welcome screen when no [project](#) is open.

- [Recent Projects](#)
- [Quick Start](#)
- [Configure](#)
- [Project Defaults](#)
- [Docs and How-Tos](#)



Recent Projects

In this pane, the [projects](#) you've been recently working with are shown. Click a project to reopen it.

Quick Start

This pane provides access to quick start options. Click an option of interest:

- **Create New Project.** Start creating a [project](#) from scratch. For more information, see [Creating a Project from Scratch](#).
- **Import Project.** Start creating a project by importing the sources available on your computer. This may be the sources that originate from Eclipse, Flash Builder, Gradle, or Maven, or a collection of sources of other origin. For more information, see [Creating a Project by Importing Existing Sources](#).
- **Open Project.** Open an existing project. For more information, see [Opening, Reopening and Closing Projects](#).

- **Check out from Version Control.** Start creating a project by checking out the sources from a version control system. For more information, see [Getting Local Working Copy of the Repository](#).
- **Configure** ➔. Show the [Configure](#) pane.
- **Docs and How-Tos** ➔. Show the [Docs and How-Tos](#) pane.

Configure

This pane provides access to various configuration options. Click an option of interest:

- **Settings.** Open the [Settings dialog](#) to configure IntelliJ IDEA and template project settings.
- **Plugins.** Open the [Plugins dialog](#) to manage IntelliJ IDEA [plugins](#). For more information, see [Managing Plugins](#).
- **Import Settings.** Import IntelliJ IDEA settings from the `settings.jar` file (if you have this file available). For more information, see [Exporting and Importing Settings](#).
- **Export Settings.** Save the current IntelliJ IDEA settings in a file (`settings.jar`). For more information, see [Exporting and Importing Settings](#).
- **Project Defaults** ➔. Show the [Project Defaults](#) pane.

Click  to show the [Quick Start](#) pane.

Project Defaults

This pane provides access to configuration options related to default project settings and structure as well as [run configurations](#). Click an option of interest:

- **Settings.** Open the [Settings dialog](#) to configure template project settings.
- **Project Structure.** Open the [Project Structure dialog](#) to define [libraries](#), [SDKs](#), and to configure default project settings.
- **Run Configurations.** Open the [Run/Debug Configurations dialog](#) to configure default settings for [run/debug configurations](#).

Click  to show the [Configure](#) pane.

Docs and How-Tos

This pane provides access to sources of information about IntelliJ IDEA. Click an option of interest:

- **Read Help.** Open the IntelliJ IDEA Help.
- **Tips of the Day.** Show IntelliJ IDEA usage tips.
- **Default Keymap Reference.** Show a list of IntelliJ IDEA keyboard shortcuts (a `.pdf` document).
- **JetBrains TV.** Watch IntelliJ IDEA video tutorials and screencasts.
- **Plugin Development.** Learn about IntelliJ IDEA plugins and plugin development.

Click  to show the [Quick Start](#) pane.

See Also

Concepts:

- [Project](#)

Procedures:

- [Creating and Managing Projects](#)
- [Version Control with IntelliJ IDEA](#)

Web Resources:

- [Developer Community](#) 