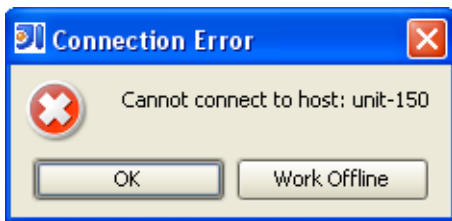


Working Offline

Offline mode in CVS makes it possible to ignore network errors. When this mode is enabled, you will not receive any notifications about connection problems.

You can go to offline mode in two ways

- When a connection error occurs, you are presented with an option to work offline.



With the first successful transaction, offline modes automatically turns off.

- Using the CVS menu command on the main Version Control menu, or a context menu: **VCS | CVS | Work Offline**.

See Also

Concepts:

- [Supported Version Control Systems](#)

Reference:

- [Version Control Reference](#)

Web Resources:

- [Developer Community](#) 