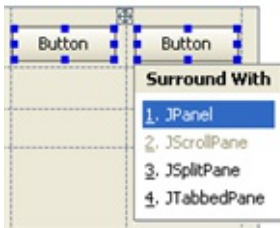


Wrapping/Unwrapping Components

The [Surround With](#) feature is available in the GUI Designer, as well as in the editor. In the GUI Designer, you can wrap a container of your choice around one or more components, and remove wrapping.

To wrap a container around components

1. Select one or more components in the Form Workspace, or in the Components tree view.
2. On the context menu of the selection, choose **Surround with**, or press **Ctrl+Alt+T**.
3. In the Surround With popup menu, click the desired container, or press the corresponding numeric key.

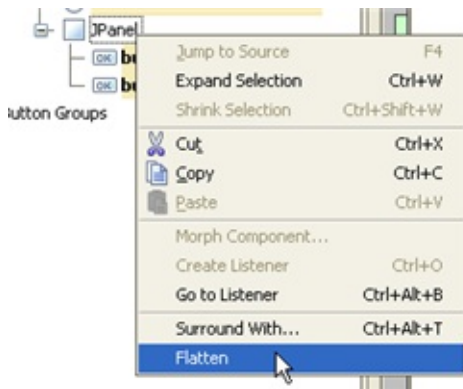


When reasonable, IntelliJ IDEA smartly suggests you to wrap a component into a container. This is done with the help of intention action. For example, IntelliJ IDEA suggests to wrap a `JList` into a `JScrollPane`:



To unwrap components from the surrounding container

1. Right-click container node in the Components tree view.
2. On the context menu, choose **Flatten**.



See Also

Reference:

- [Advanced Editing](#)

Web Resources:

- [Developer Community](#)